

Sexual Assault, Domestic Violence and Child Abuse - During / Post Disasters

It Can Happen to Your Age
Tools for Change: Emergency Management
for Women's Services

January 2001

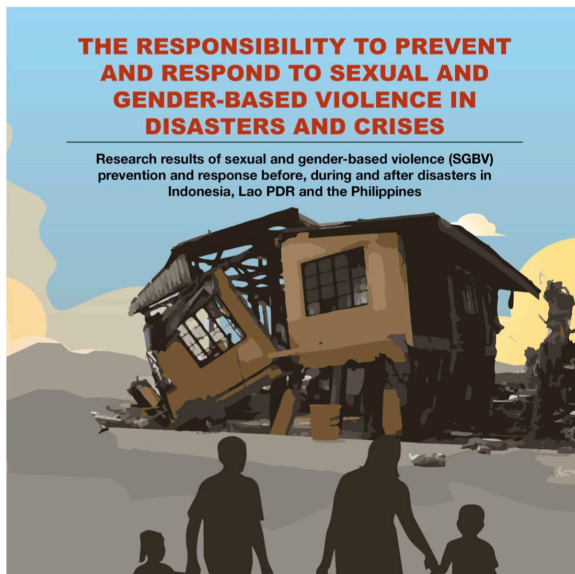
B.C. Association of Specialized Victim Assistance and Counsellors
Vancouver, British Columbia

FUNDING PROVIDED BY:

The Ministry for Children and Families
The Ministry of Women's Equality
The Ministry of Social Development and Economic

THE RESPONSIBILITY TO PREVENT AND RESPOND TO SEXUAL AND GENDER-BASED VIOLENCE IN DISASTERS AND CRISES

Research results of sexual and gender-based violence (SGBV)
prevention and response before, during and after disasters in
Indonesia, Lao PDR and the Philippines



EVA NOTES ENDING VIOLENCE Association of BC

A recurring series of notes on gender-based violence

AUGUST 2016

WHEN DISASTERS STRIKE



DISASTERS CAN BE UNPREDICTABLE

In the aftermath of disaster, whether natural (e.g. fire, flood, earthquake) or human-made (e.g. blackout, explosion), community-based anti-violence organizations in the effected area are likely to face a unique set of challenges.

VIOLENCE AGAINST WOMEN IN THE AFTERMATH OF DISASTER

North American case studies and first-hand accounts indicate that violence against women is likely to increase after a disaster. The United Nations Office for Disaster Risk Reduction (2005) states that, during and after a disaster, women/girls are at increased risk of:

Reports from
LOMA PRITA EARTHQUAKE
Magnitude 6.9
Santa Cruz, California (1989)

Increased Incidence of Violence

harassment
violence
marriage

ate a difficult set of
vivors of sexual and/or
for example, women in
may find themselves
evacuation centres as
s/survivors also face the
re-traumatized in the
er, often due to renewed
essness and loss of

st through disasters
(housing, child care, etc.)
choices for survivors. It
ilt to leave an abusive
en may be coerced to
relationship.

3 things to help prevent violence
in migrant camps:

- Safe and private living spaces
- Clear and well-lit access routes
- Separate, well-lit and secure toilets

INTERNATIONAL DAY
**FOR THE ELIMINATION
OF VIOLENCE AGAINST WOMEN**

BritishRedCross

A Canada-ASEAN
project, funded by | Can

International Fed
of Red Cross and

A 2011 survey of sexual violence against women
during the conflict in the Democratic Republic of
Congo found that there were approximately

1,150

women raped every day
(aged 15-49)

48

women raped
every hour

4

women raped
every 5 minutes



Global Impacts of COVID-19

- The United Nations Secretary General, António Guterres, has identified a “**horrifying global surge in domestic violence**” and called on nations to center domestic violence in COVID-19 response plans.
- “With 90 countries in lockdown, **four billion people are now sheltering at home**. It’s a protective measure, but it brings another deadly danger. We see a **shadow pandemic** growing, of violence against women.

(Phumzile Mlambo-Ngcuka,
Executive Director of UN Women)

Impacts in Canada and BC

Community-based anti-violence programs across BC have identified emergency needs for their agencies and clients:

- Resources to meet survivors' basic needs
- Masks, gloves, hand sanitizer, bleach, wipes, PPEs
- Deemed as essential services
- Secure technology - laptops, tablets, cell phones, data, minutes - to ensure ongoing support and communication with clients
- Secure platforms/software to provide counselling and other supports
- Safe housing and transportation

Recommended Actions

- Prepare for an increase in gender-based violence
- Clearly communicate the impacts of COVID-19 on the diverse needs of survivors of gender-based violence
- Deem anti-violence services as essential services
- Adapt gender-based violence response systems
- Recognize and respond to the impacts of occupational stress and vicarious trauma on anti-violence workers
- Increase funding and support for the anti-violence sector, and be flexible in funding/reporting requirements

Victim Link 24/7 Support and Referral Line

- VictimLinkBC is a toll-free, confidential, multilingual telephone service available across B.C. and the Yukon 24 hours a day, 7 days a week by calling 1-800-563-0808 or sending an email to VictimLinkBC@bc211.ca.
- It provides information and referral services to all victims of crime and immediate crisis support to victims of family and sexual violence